

**NEW**

# 70mm Window and Doors

Now available from your local Quay Plastics



**Quay Plastics**<sup>TM</sup>

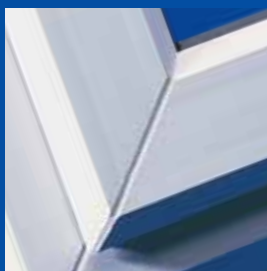
PLASTIC BUILDING PRODUCTS

# Quay Plastics have introduced both a traditional chamfered system and an attractive sculptured suite so you can get the perfect product for every application.

Our 70mm frames are expertly manufactured using the Profile 22 system. Made to measure to your exact requirements all frames are **available on a 7 day turnaround.**

## Chamfered System

- Styles include casement, tilt & turn or fully reversible
- Internal glazing and fully welded frames
- High security hardware and handles
- Stylish slim sightlines
- Fully accredited and compliant to the latest building regulations
- Virtually any configuration of vents
- 28mm glazed units and cranked handles
- Choice of white, rosewood, antique oak finishes (on white option)
- Extensive choice of stylish glazing
- Unglazed frames available if required



## Sculptured Suite

- Fully sculptured slim line suite
- Offers enhanced aesthetics
- Pre-applied gasket and click fit beads
- Specially designed range of Safeware hardware
- Superb thermal efficiency
- Choice of white, rosewood, antique oak finishes (on white option)
- 28mm feature beads
- Specification includes 59mm outer frame and 70mm sash
- Fully accredited and compliant to the latest building regulations
- Unglazed frames available if required



At Quay Plastics  
we are continually adding to our  
already extensive product range to ensure you can  
get everything you need from your plastic building product specialist.

For a **FREE quotation** or further product details contact your local branch.

**Bromborough T: 0151 334 0575**

Unit 1, Woodway Court, Thursby Road, Croft Business Park, Bromborough, Wirral, Merseyside CH62 3PW

**Colchester T: 01206 864832**

Unit 2, Grange Way Business Park, Grange Way, Whitehall Industrial Estate, Colchester CO2 8HG

**Coventry T: 02476 664023**

Unit G1, Little Heath Ind Estate, Old Church Road, Coventry CV6 7NB

**Harlow T: 01279 453330**

Unit 22, Mead Park Industrial Estate, Riverway, Harlow, Essex, CM20 2SE

**Hull T: 01482 329037**

Unit 7 Central Park, Cornwall Street, Hull HU8 8AF

**Leeds T: 0113 236 3969**

Unit 4, Bestway Court, Inter City Way, Leeds LS13 4LQ

**Liverpool T: 0151 523 9879**

Unit 7F, Topham Drive, Aintree Race Course Retail & Business Park, Aintree, Liverpool L9 5AL

**Middlesbrough T: 01642 465544**

Units C21-C22, Tees Court, Wallis Road, Skippers Lane Ind Estate, Middlesbrough, Cleveland TS6 6DX

**Newcastle T: 0191 270 2141**

Unit 5, Tyne Tunnel Trading Estate, Narvic Way, North Shields NE29 7XJ

**Reading T: 0118 975 8056**

Unit 4, Robert Cort Industrial Estate, Britten Road, Reading, Berkshire RG2 0AU

**Rotherham T: 01709 377861**

Unit 3D, Thornhill Ind Estate, Hope Street, Rotherham, South Yorkshire S60 1LH

**Tameside T: 0161 339 9933**

Unit 4, Tameside Court, Tameside Business Park, Fifth Avenue, Duckinfield, Cheshire SK16 4PW

**West Midlands T: 0121 555 6664**

Unit 3, Redwood Business Park, Oldbury Road, Smethwick, Warley, West Midlands B66 1NJ

**Quay Plastics**<sup>TM</sup>

PLASTIC BUILDING PRODUCTS

**For further details visit [www.quayplastics.co.uk](http://www.quayplastics.co.uk)**

Quay Plastics policy is one of continuous improvement and we they reserve the right to change specification, prices and designs at any time without notice. Reproduction of this brochure in part or full is strictly forbidden without the written consent of Quay Plastics REF:QUAY/8710